

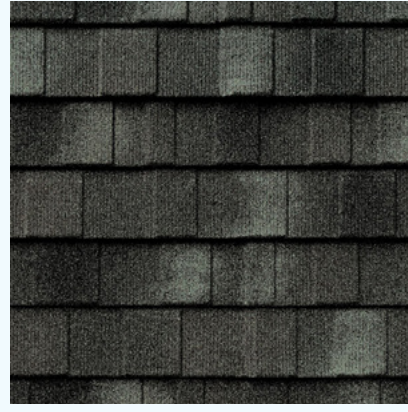
STONE COATED STEEL ROOFING

Recommended Hooks

For Interlocking Panels, Direct-to-Deck Install
PN: 17750, 17628



DECRA ShakeXD



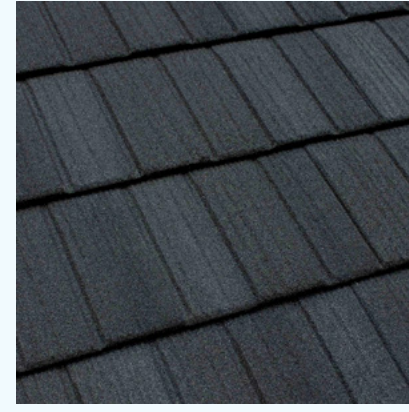
DECRA ShingleXD



Unified Steel
Granite-Ridge Shingle

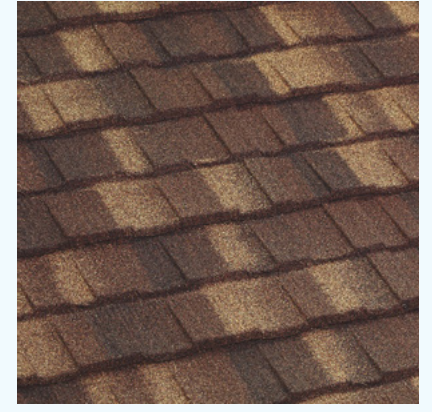


Tilcor CF Shingle



Tilcor CF Shake

For Overlapping Panels,
Direct-to-Deck Install
**PN: 17628, 17550,
17554, 17622, 17538**



Unified Steel
Cottage Shingle

For Overlapping Panels, On-Batten Install
PN: 17550, 17554, 17622, 17538



DECRA Shake



Tilcor
Craftsman Shake

For Overlapping Panels
with EBS batten system
**PN: 17550, 17554,
17622, 17538, 17640**



Unified Steel
Pine-Crest Shake

For Overlapping Panels
Direct To Deck – **PN: 17628**
On-Batten – **PN: 17550,
17554, 17622, 17538**

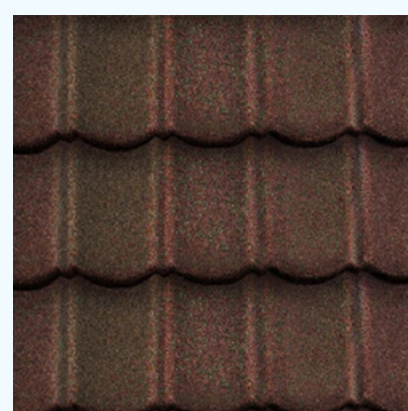


DECRA Shingle Plus

For Overlapping Panels, Direct-to-Deck or On-Batten Install
PN: 17640



DECRA Villa Tile

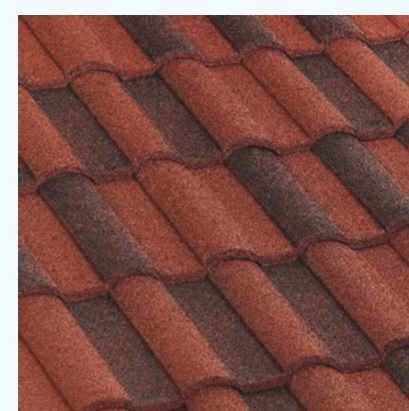


DECRA Tile

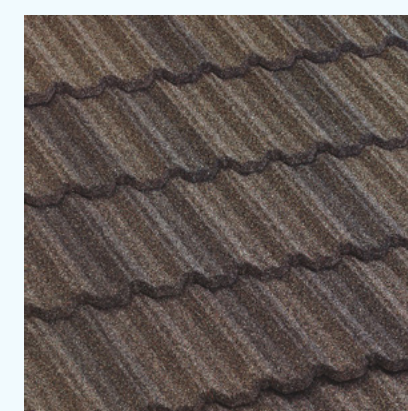


Tilcor Antica

For Overlapping Panels with traditional
2x2 batten system and EBS batten system
PN: 17640



Unified Steel
Barrel-Vault Tile



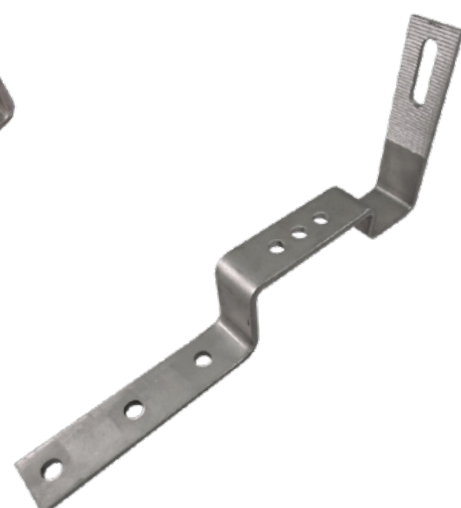
Unified Steel
Pacific Tile



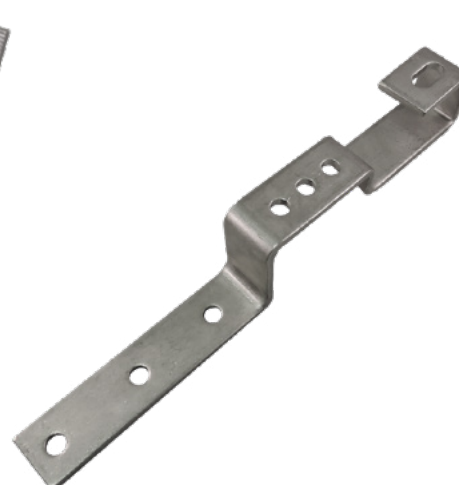
17550



17554



17622



17538



17640



17628



17750



Compatibility extends beyond the roof profiles listed above. Reach out for more info.

(888) 567-0832 | QUICKBOLT.COM